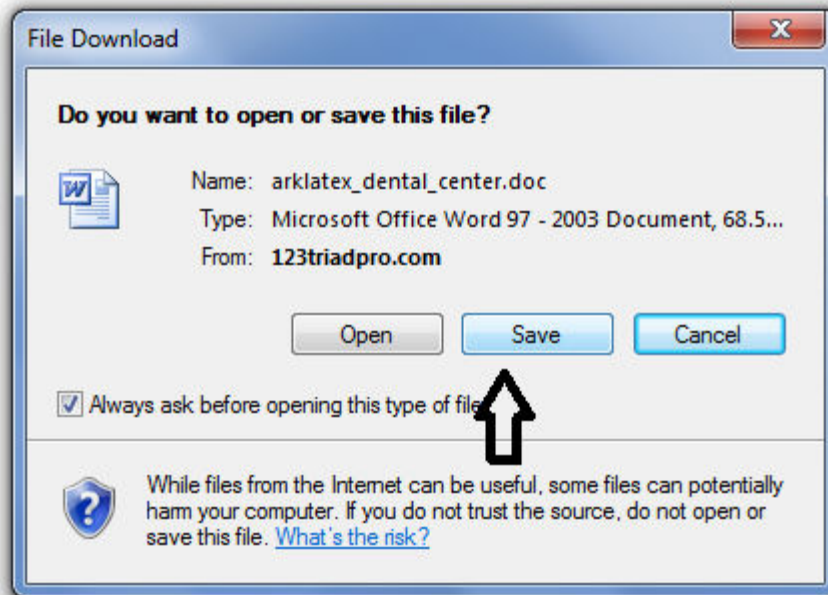
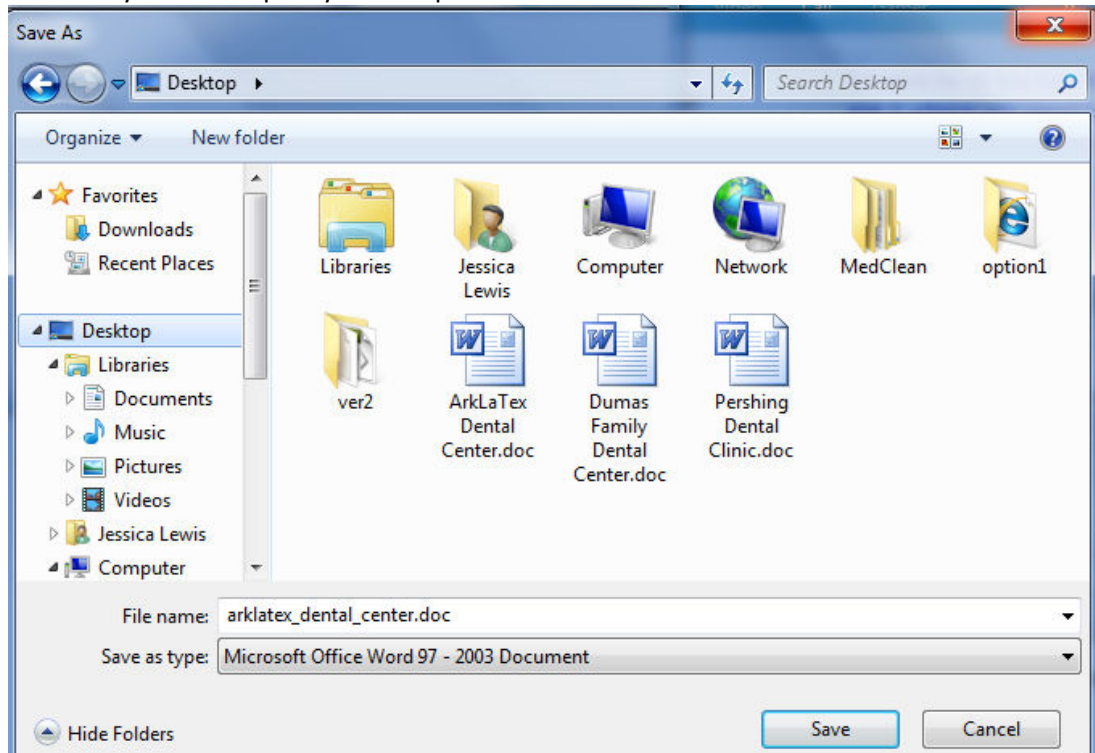


Below are directions on how to download, fill out and upload the patient forms.

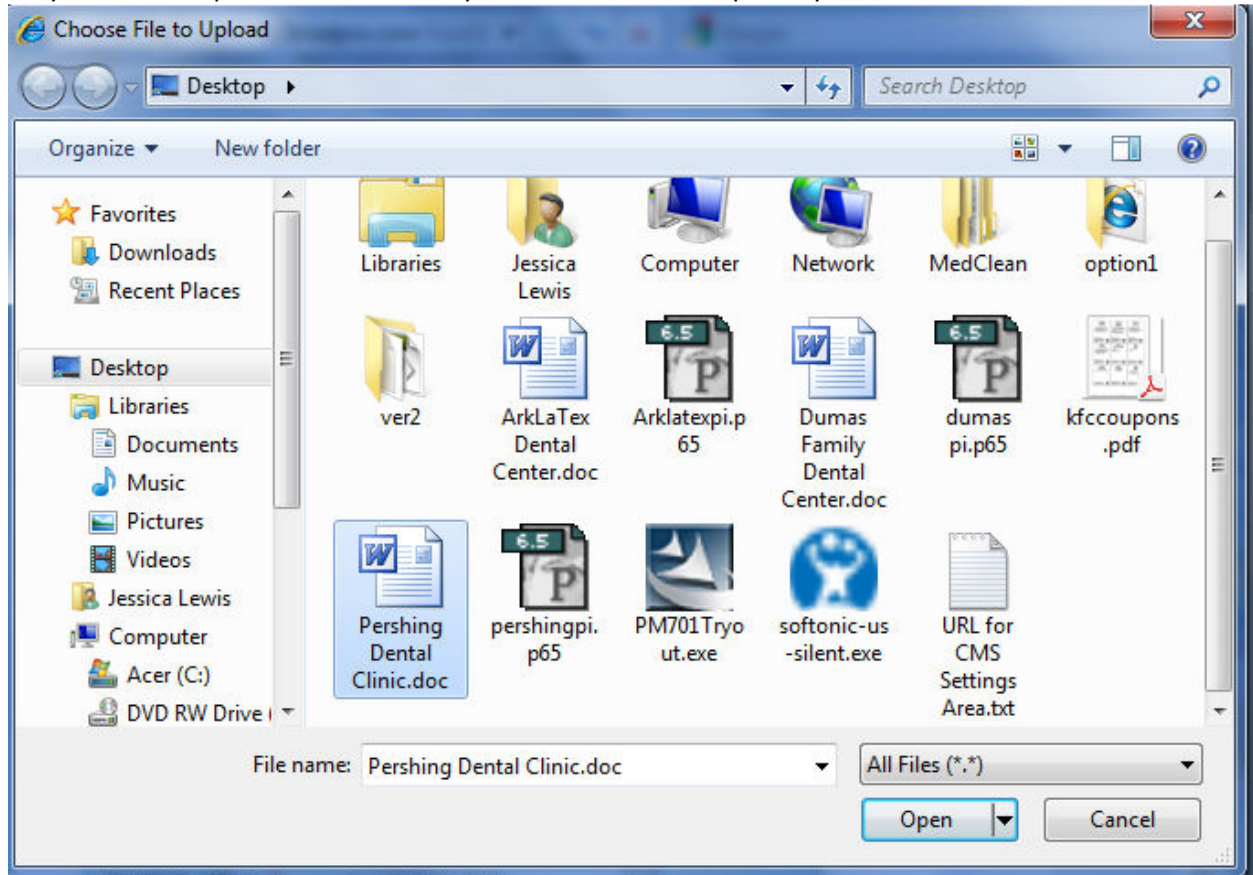
1. Click on the form for the dentist office you will be visiting.
2. A pop up window will appear asking you to open or save the document.



3. Save it to your desktop on your computer.



- Once you have saved it on your computer, fill out the form in its entirety, save it and close the document.
- Go back to the website and fill out the form field box. For the last box, click the Browse button. You will be able to upload the form you just filled out and submit it to the dentist office.
- When you click the browse button, a pop up window will pop up asking you to choose the file you want to upload. Select the file you want and hit the open key.



- Now hit the submit button and the form will be sent to the dentist office.